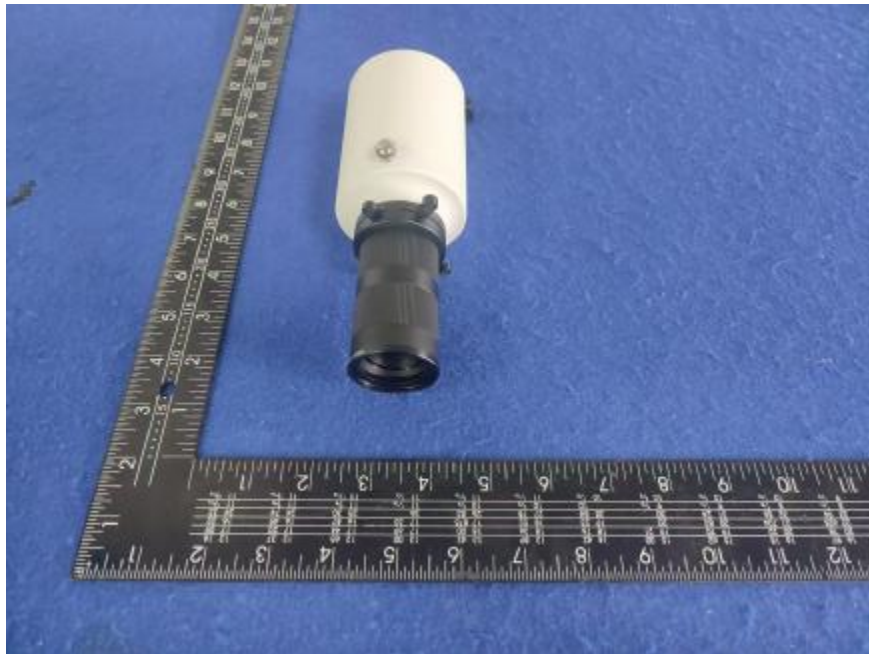


Luminaire Photograph



Light Output Ratio:	33.9%	
Luminaire Power:	14.54 W	
SHR Nominal:	0.00	Calculated using the TM5
SHR Maximum:	0.25	fine grid method.

C Range: 0 - 360DEG
C Interval: 30.0DEG
Test Speed: HIGH
Temperature: 25.3 °C
Operators: zoe
Test Date: 2025-1-8

Range: 0 - 180DEG
Interval: 1.0DEG
Test System: EVERFINE GO-SPEX500_V1 SYSTEM V2.00.461
Humidity: 65.0%
Test Distance: 3.160m [K=1.0000]
Remarks: LAMP: BXRE-30H1000-A-83 Ra: 95
LENS: SDX-Mini-Z2035-WH 30R
NOT DRIVER: 48V
30minutes warm-up

LUMINOUS INTENSITY DISTRIBUTION DIAGRAM

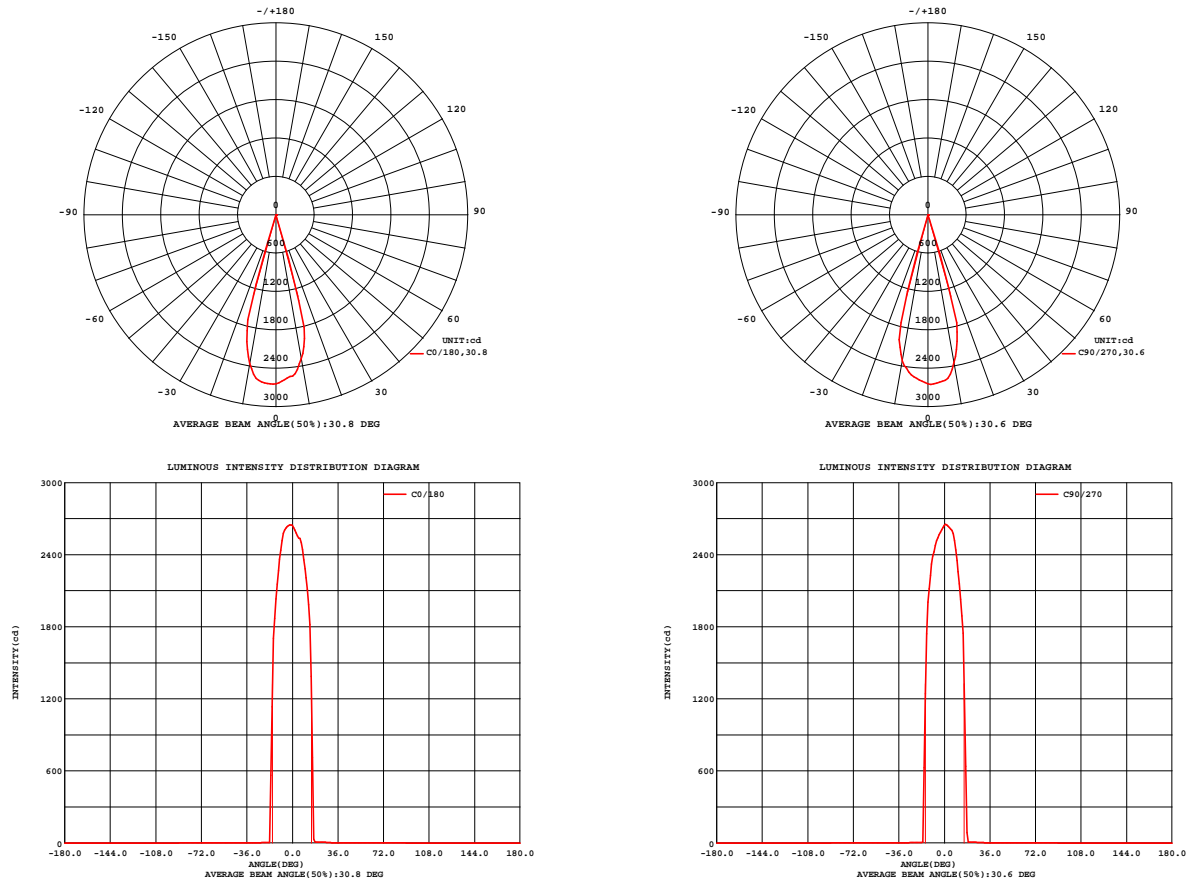


Fig. C0/C180

Fig. C90/C270

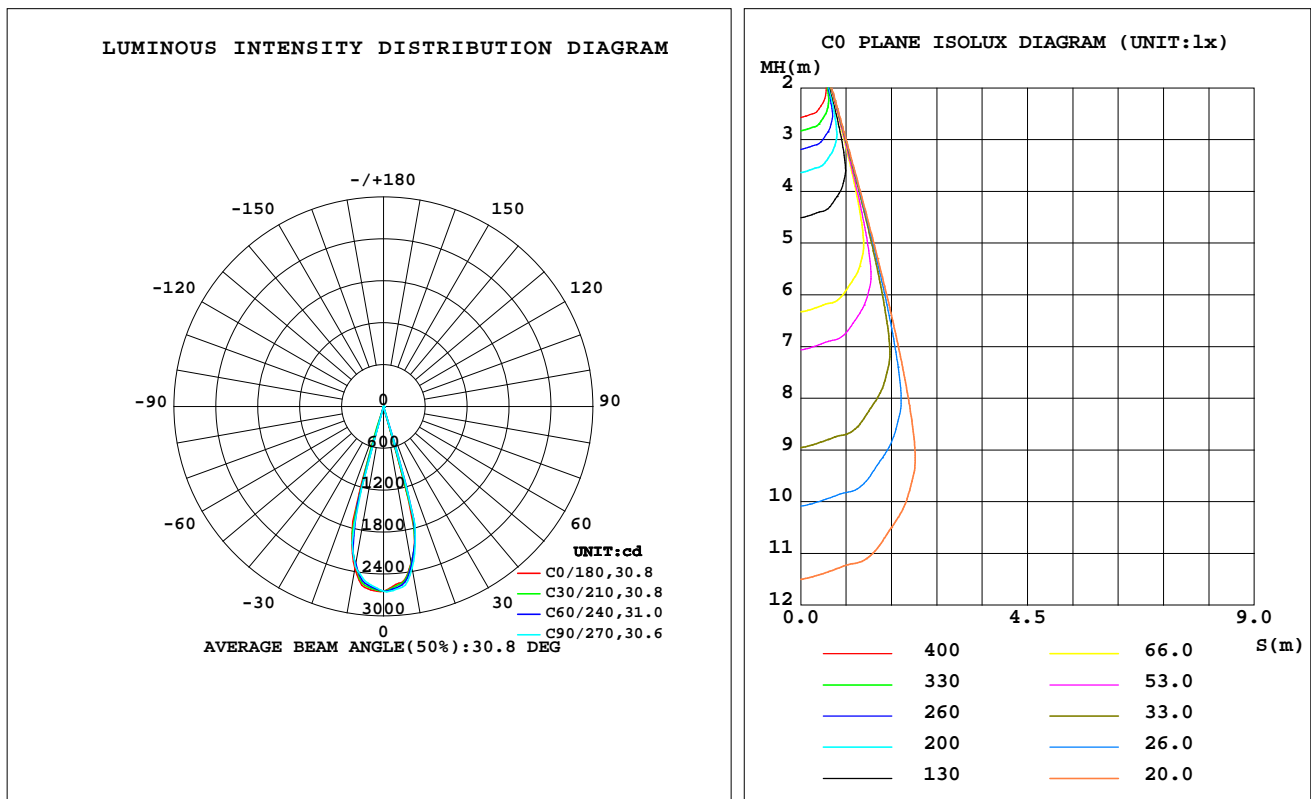
C Range: 0 - 360DEG
C Interval: 30.0DEG
Test Speed: HIGH
Temperature: 25.3 °C
Operators: zoe
Test Date: 2025-1-8

Range: 0 - 180DEG
Interval: 1.0DEG
Test System: EVERFINE GO-SPEX500_V1 SYSTEM V2.00.461
Humidity: 65.0%
Test Distance: 3.160m [K=1.0000]
Remarks: LAMP: BXRE-30H1000-A-83 Ra: 95
LENS: SDX-Mini-Z2035-WH 30R
NOT DRIVER: 48V
30minutes warm-up

LUMINAIRE PHOTOMETRIC TEST REPORT

Test:U:47.997V I:0.3030A P:14.543W PF:1.0000 Freq:0Hz Lamp Flux:1597.41x1 lm		
NAME: OZ48-SBF-64	TYPE:	WEIGHT:
SPEC.: 3000K	DIM.:	SERIAL No.: 2501080041
MFR.: RISE	SUR.: 0.00101736m2	Shielding Angle:

DATA OF LAMP		PHOTOMETRIC DATA Eff: 37.21 lm/W			
MODEL	Brideglux	Imax(cd)	2656	S/MH(C0/180)	0.42
NOMINAL POWER(W)	15	LOR(%)	33.9	S/MH(C90/270)	0.40
RATED VOLTAGE(V)	48	TOTAL FLUX(lm)	541.21	UP,DN(C0-180)	0.0,17.6
NOMINAL FLUX(lm)	1597.41	CIE CLASS	DIRECT	UP,DN(C180-360)	0.0,16.3
LAMPS INSIDE	1	up(%)	0.0	CIBSE SHR NOM	0.00
TEST VOLTAGE(V)	48	down(%)	33.9	CIBSE SHR MAX	0.25



C Range: 0 - 360DEG
C Interval: 30.0DEG
Test Speed: HIGH
Temperature:25.3℃
Operators:zoe
Test Date:2025-1-8

Range: 0 - 180DEG
Interval: 1.0DEG
Test System:EVERFINE GO-SPEX500_V1 SYSTEM V2.00.461
Humidity:65.0%
Test Distance:3.160m [K=1.0000]
Remarks: LAMP:BXRE-30H1000-A-83 Ra:95
LENS:SDX-Mini-Z2035-WH 30R
NOT DRIVER:48V
30minutes warm-up

ZONAL FLUX DIAGRAM

ZONAL FLUX DIAGRAM:

	C0	C45	C90	C135	C180	C225	C270	C315		zone	total	%lum,lamp
10	2281	2300	2351	2375	2362	2300	2322	2297	0- 10	239.1	239.1	44.2,15
20	7.180	7.930	6.785	10.33	3.719	3.711	3.891	3.914	10- 20	298.9	537.9	99.4,33.7
30	3.278	4.348	3.968	3.680	2.080	2.179	2.253	2.217	20- 30	1.995	539.9	99.8,33.8
40	0.3878	0.4010	0.4482	0.6868	0.7526	0.7307	0.5606	0.4717	30- 40	0.7688	540.7	99.9,33.8
50	0.1703	0.1822	0.1984	0.2956	0.3357	0.3168	0.2332	0.1936	40- 50	0.2883	541.0	100,33.9
60	0.0791	0.0839	0.0884	0.1214	0.1357	0.1308	0.0989	0.0859	50- 60	0.1468	541.1	100,33.9
70	0.0453	0.0317	0.0319	0.0309	0.0428	0.0331	0.0479	0.0476	60- 70	0.0679	541.2	100,33.9
80	0.0164	0.0070	0.0146	0.0081	0.0143	0.0058	0.0131	0.0085	70- 80	0.0150	541.2	100,33.9
90	0	0	0	0	0	0	0	0	80- 90	0.0096	541.2	100,33.9
100	0	0	0	0	0	0	0	0	90-100	0	541.2	100,33.9
110	0	0	0	0	0	0	0	0	100-110	0	541.2	100,33.9
120	0	0	0	0	0	0	0	0	110-120	0	541.2	100,33.9
130	0	0	0	0	0	0	0	0	120-130	0	541.2	100,33.9
140	0	0	0	0	0	0	0	0	130-140	0	541.2	100,33.9
150	0	0	0	0	0	0	0	0	140-150	0	541.2	100,33.9
160	0	0	0	0	0	0	0	0	150-160	0	541.2	100,33.9
170	0	0	0	0	0	0	0	0	160-170	0	541.2	100,33.9
180	0	0	0	0	0	0	0	0	170-180	0	541.2	100,33.9
DEG	LUMINOUS INTENSITY:cd									UNIT:lm		

C Range: 0 - 360DEG
C Interval: 30.0DEG
Test Speed: HIGH
Temperature:25.3℃
Operators:zoe
Test Date:2025-1-8

Range: 0 - 180DEG
Interval: 1.0DEG
Test System:EVERFINE GO-SPEX500_V1 SYSTEM V2.00.461
Humidity:65.0%
Test Distance:3.160m [K=1.0000]
Remarks: LAMP:BXRE-30H1000-A-83 Ra:95
LENS:SDX-Mini-Z2035-WH 30R
NOT DRIVER:48V
30minutes warm-up

LUMINANCE LIMITATION CURVES

Test:U:47.997V I:0.3030A P:14.543W PF:1.0000 Freq:0Hz
Lamp Flux:1597.4lx1 lm

NAME: OZ48-SBF-64

TYPE:

WEIGHT:

SPEC.: 3000K

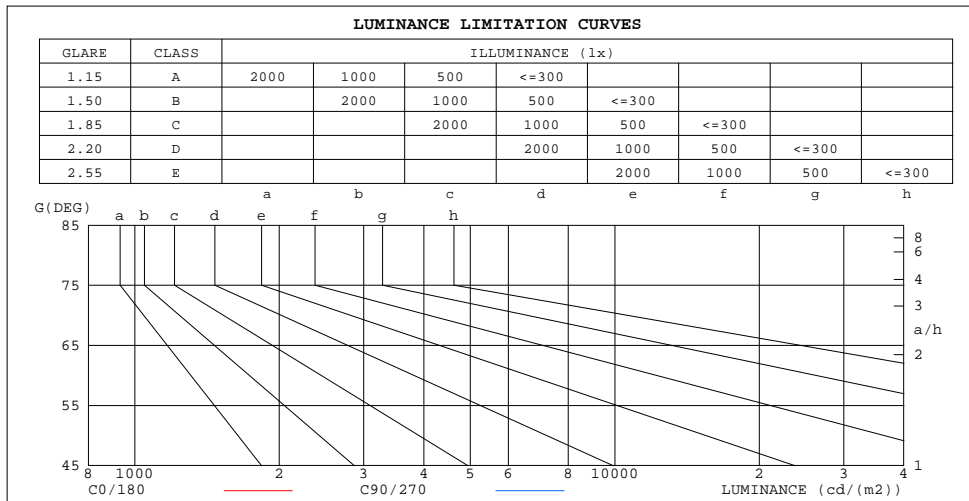
DIM.:

SERIAL No.: 2501080041

MFR.: RISE

SUR.: 0.00101736m2

Shielding Angle:



LUMINANCE cd/(m2)		
G(180)	C0/180	C90/270
85	202	175
80	93	83
75	57	39
70	130	91
65	141	142
60	156	173
55	197	222
50	261	303
45	358	390

C Range: 0 - 360DEG
C Interval: 30.0DEG
Test Speed: HIGH
Temperature:25.3℃
Operators:zoe
Test Date:2025-1-8

Range: 0 - 180DEG
Interval: 1.0DEG
Test System:EVERFINE GO-SPEX500_V1 SYSTEM V2.00.461
Humidity:65.0%
Test Distance:3.160m [K=1.0000]
Remarks: LAMP:BXRE-30H1000-A-83 Ra:95
LENS:SDX-Mini-Z2035-WH 30R
NOT DRIVER:48V
30minutes warm-up

CU AND LUMINAIRE BUDGETARY ESTIMATE DIAGRAM

Test:U:47.997V I:0.3030A P:14.543W PF:1.0000 Freq:0Hz
Lamp Flux:1597.41x1 lm

NAME: OZ48-SBF-64

TYPE:

WEIGHT:

SPEC.: 3000K

DIM.:

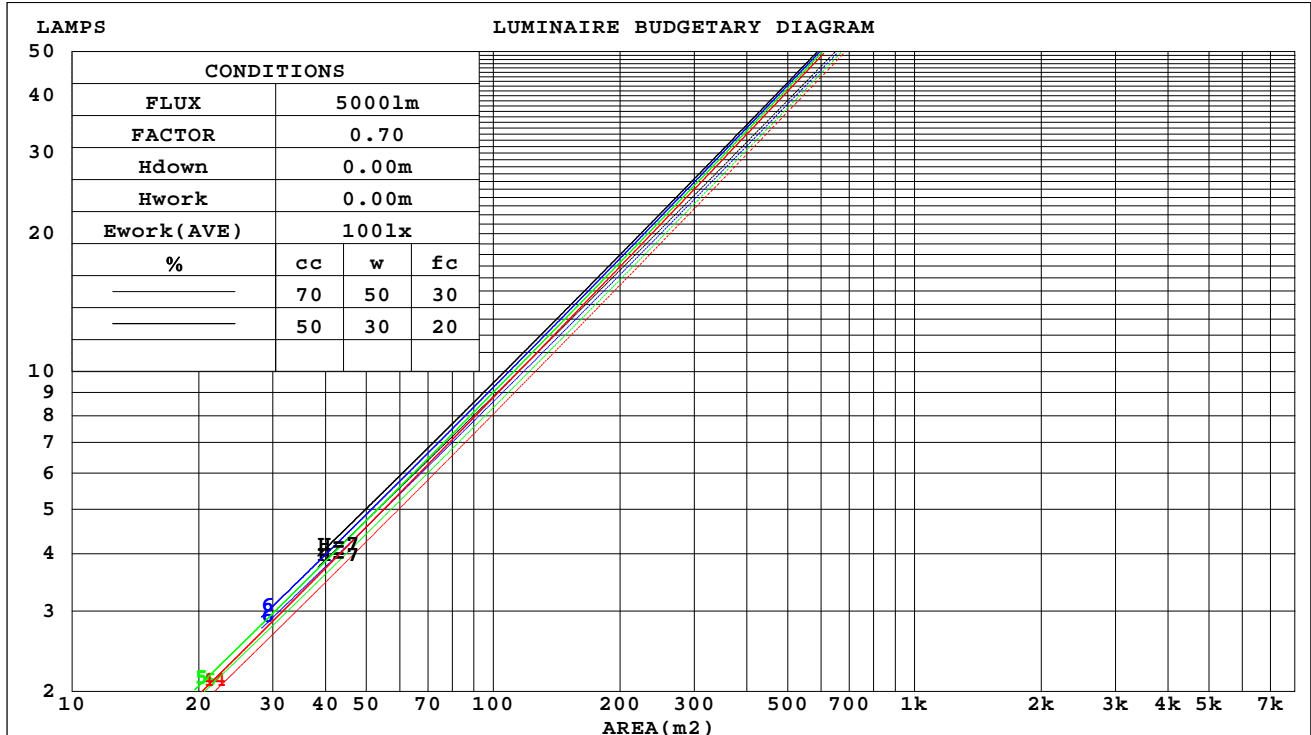
SERIAL No.: 2501080041

MFR.: RISE

SUR.: 0.00101736m2

Shielding Angle:

cc	80%			70%			50%			30%			10%			0
w	50%	30%	10%	50%	30%	10%	50%	30%	10%	50%	30%	10%	50%	30%	10%	0
fc	20%			20%			20%			20%			20%			0
RCR	RCR:Room Cavity Ratio															



C Range: 0 - 360DEG
C Interval: 30.0DEG
Test Speed: HIGH
Temperature:25.3℃
Operators:zoe
Test Date:2025-1-8

Range: 0 - 180DEG
Interval: 1.0DEG
Test System:EVERFINE GO-SPEX500_V1 SYSTEM V2.00.461
Humidity:65.0%
Test Distance:3.160m [K=1.0000]
Remarks: LAMP:BXRE-30H1000-A-83 Ra:95
LENS:SDX-Mini-Z2035-WH 30R
NOT DRIVER:48V
30minutes warm-up

WEC AND CCEC

Test:U:47.997V I:0.3030A P:14.543W PF:1.0000 Freq:0Hz Lamp Flux:1597.4lx1 lm		
NAME: OZ48-SBF-64	TYPE:	WEIGHT:
SPEC.: 3000K	DIM.:	SERIAL No.: 2501080041
MFR.: RISE	SUR.: 0.00101736m2	Shielding Angle:

cc	80%			70%			50%			30%			10%			0
w	50%	30%	10%	50%	30%	10%	50%	30%	10%	50%	30%	10%	50%	30%	10%	0
fc	20%			20%			20%			20%			20%			0
RCR	RCR:Room Cavity Ratio Wall Exitance Coefficients(WEC)															
0.0																
1.0	.041	.023	.007	.039	.022	.007	.035	.020	.006	.031	.018	.006	.028	.016	.005	
2.0	.038	.021	.006	.036	.020	.006	.032	.018	.006	.029	.016	.005	.026	.015	.005	
3.0	.035	.018	.006	.033	.018	.005	.030	.016	.005	.028	.015	.005	.025	.014	.004	
4.0	.032	.017	.005	.031	.016	.005	.029	.015	.005	.026	.014	.004	.024	.013	.004	
5.0	.030	.015	.004	.029	.015	.004	.027	.014	.004	.025	.013	.004	.023	.013	.004	
6.0	.028	.014	.004	.027	.014	.004	.026	.013	.004	.024	.013	.004	.023	.012	.004	
7.0	.027	.013	.004	.026	.013	.004	.024	.012	.004	.023	.012	.003	.022	.011	.003	
8.0	.025	.012	.003	.025	.012	.003	.023	.012	.003	.022	.011	.003	.021	.011	.003	
9.0	.024	.012	.003	.024	.011	.003	.022	.011	.003	.021	.011	.003	.020	.010	.003	
10.0	.023	.011	.003	.023	.011	.003	.022	.011	.003	.021	.010	.003	.020	.010	.003	

cc	80%			70%			50%			30%			10%			0
w	50%	30%	10%	50%	30%	10%	50%	30%	10%	50%	30%	10%	50%	30%	10%	0
fc	20%			20%			20%			20%			20%			0
RCR	RCR:Room Cavity Ratio Ceiling Cavity Exitance Coefficients(CCEC)															
0.0	.065	.065	.065	.055	.055	.055	.038	.038	.038	.022	.022	.022	.007	.007	.007	
1.0	.057	.053	.051	.049	.046	.044	.033	.032	.030	.019	.018	.018	.006	.006	.006	
2.0	.050	.045	.041	.043	.039	.035	.029	.027	.024	.017	.016	.014	.005	.005	.005	
3.0	.045	.038	.033	.038	.033	.029	.026	.023	.020	.015	.013	.012	.005	.004	.004	
4.0	.040	.033	.028	.035	.029	.024	.024	.020	.017	.014	.012	.010	.004	.004	.003	
5.0	.036	.029	.023	.031	.025	.020	.022	.017	.014	.012	.010	.008	.004	.003	.003	
6.0	.033	.025	.020	.029	.022	.017	.020	.015	.012	.011	.009	.007	.004	.003	.002	
7.0	.031	.022	.017	.026	.019	.015	.018	.014	.010	.011	.008	.006	.003	.003	.002	
8.0	.028	.020	.015	.024	.017	.013	.017	.012	.009	.010	.007	.005	.003	.002	.002	
9.0	.026	.018	.013	.023	.016	.011	.016	.011	.008	.009	.007	.005	.003	.002	.002	
10.0	.024	.016	.011	.021	.014	.010	.015	.010	.007	.009	.006	.004	.003	.002	.001	

C Range: 0 - 360DEG
C Interval: 30.0DEG
Test Speed: HIGH
Temperature:25.3℃
Operators:zoe
Test Date:2025-1-8

Range: 0 - 180DEG
Interval: 1.0DEG
Test System:EVERFINE GO-SPEX500_V1 SYSTEM V2.00.461
Humidity:65.0%
Test Distance:3.160m [K=1.0000]
Remarks: LAMP:BXRE-30H1000-A-83 Ra:95
LENS:SDX-Mini-Z2035-WH 30R
NOT DRIVER:48V
30minutes warm-up

UGR(Unified Glare Rating) Table

Test:U:47.997V I:0.3030A P:14.543W PF:1.0000 Freq:0Hz Lamp Flux:1597.4lx1 lm											
NAME: OZ48-SBF-64					TYPE:			WEIGHT:			
SPEC.: 3000K					DIM.:			SERIAL No.: 2501080041			
MFR.: RISE					SUR.: 0.00101736m2			Shielding Angle:			
ceiling/cavity	0.7	0.7	0.5	0.5	0.3	0.7	0.7	0.5	0.5	0.3	
walls	0.5	0.3	0.5	0.3	0.3	0.5	0.3	0.5	0.3	0.3	
working plane	0.2	0.2	0.2	0.2	0.2	0.2	0.2	0.2	0.2	0.2	
Room dimensions	Viewed crosswise					Viewed endwise					
x = 2H y = 2H		-14.4	-13.9	-14.2	-13.7	-13.6	-13.7	-13.2	-13.5	-13.0	-12.9
	3H	-14.2	-13.7	-13.9	-13.5	-13.3	-13.6	-13.1	-13.4	-12.9	-12.7
	4H	-14.2	-13.7	-14.0	-13.5	-13.3	-13.6	-13.2	-13.4	-13.0	-12.8
	6H	-14.2	-13.7	-13.9	-13.5	-13.3	-13.7	-13.2	-13.4	-13.0	-12.7
	8H	-14.2	-13.7	-13.9	-13.5	-13.2	-13.6	-13.2	-13.4	-12.9	-12.7
	12H	-14.1	-13.6	-13.8	-13.4	-13.1	-13.6	-13.2	-13.3	-12.9	-12.6
4H	2H	-14.4	-13.9	-14.1	-13.7	-13.5	-13.7	-13.2	-13.5	-13.0	-12.8
	3H	-14.1	-13.7	-13.8	-13.4	-13.2	-13.6	-13.1	-13.3	-12.9	-12.6
	4H	-14.2	-13.8	-13.8	-13.5	-13.2	-13.6	-13.2	-13.3	-13.0	-12.7
	6H	-14.1	-13.8	-13.8	-13.5	-13.1	-13.7	-13.3	-13.3	-13.0	-12.6
	8H	-14.1	-13.7	-13.7	-13.4	-13.0	-13.6	-13.3	-13.2	-12.9	-12.6
	12H	-13.9	-13.6	-13.5	-13.2	-12.9	-13.5	-13.2	-13.1	-12.8	-12.5
8H	4H	-14.3	-14.0	-13.9	-13.6	-13.3	-13.8	-13.4	-13.4	-13.1	-12.7
	6H	-14.3	-14.0	-13.8	-13.6	-13.2	-13.8	-13.5	-13.4	-13.1	-12.7
	8H	-14.2	-13.9	-13.7	-13.5	-13.1	-13.7	-13.4	-13.3	-13.0	-12.6
	12H	-13.9	-13.7	-13.5	-13.3	-12.8	-13.5	-13.3	-13.1	-12.9	-12.4
12H	4H	-14.3	-14.0	-13.9	-13.7	-13.3	-13.8	-13.5	-13.4	-13.2	-12.8
	6H	-14.3	-14.1	-13.9	-13.7	-13.2	-13.8	-13.6	-13.4	-13.2	-12.7
	8H	-14.2	-14.0	-13.8	-13.6	-13.1	-13.7	-13.5	-13.3	-13.1	-12.6
Variations with the observer position at spacings(CIE Pub.117):											
S = 1.0H	+ 2.2 / - 2.4					+ 2.3 / - 2.4					
1.5H	+ 3.3 / - 1.5					+ 3.6 / - 1.6					
2.0H	+ 2.3 / - 1.5					+ 2.2 / - 1.6					

CIE Pub.117, 1597 lm Total Lamp Luminous Flux Correct (8log(F/F0) = 1.6)
Area: 0.00101736 m2

C Range: 0 - 360DEG
C Interval: 30.0DEG
Test Speed: HIGH
Temperature:25.3℃
Operators:zoe
Test Date:2025-1-8

Range: 0 - 180DEG
Interval: 1.0DEG
Test System:EVERFINE GO-SPEX500_V1 SYSTEM V2.00.461
Humidity:65.0%
Test Distance:3.160m [K=1.0000]
Remarks: LAMP:BXRE-30H1000-A-83 Ra:95
LENS:SDX-Mini-Z2035-WH 30R
NOT DRIVER:48V
30minutes warm-up

UTILIZATION FACTORS TABLE

Test:U:47.997V I:0.3030A P:14.543W PF:1.0000 Freq:0Hz Lamp Flux:1597.4lx1 lm		
NAME: OZ48-SBF-64	TYPE:	WEIGHT:
SPEC.: 3000K	DIM.:	SERIAL No.: 2501080041
MFR.: RISE	SUR.: 0.00101736m2	Shielding Angle:

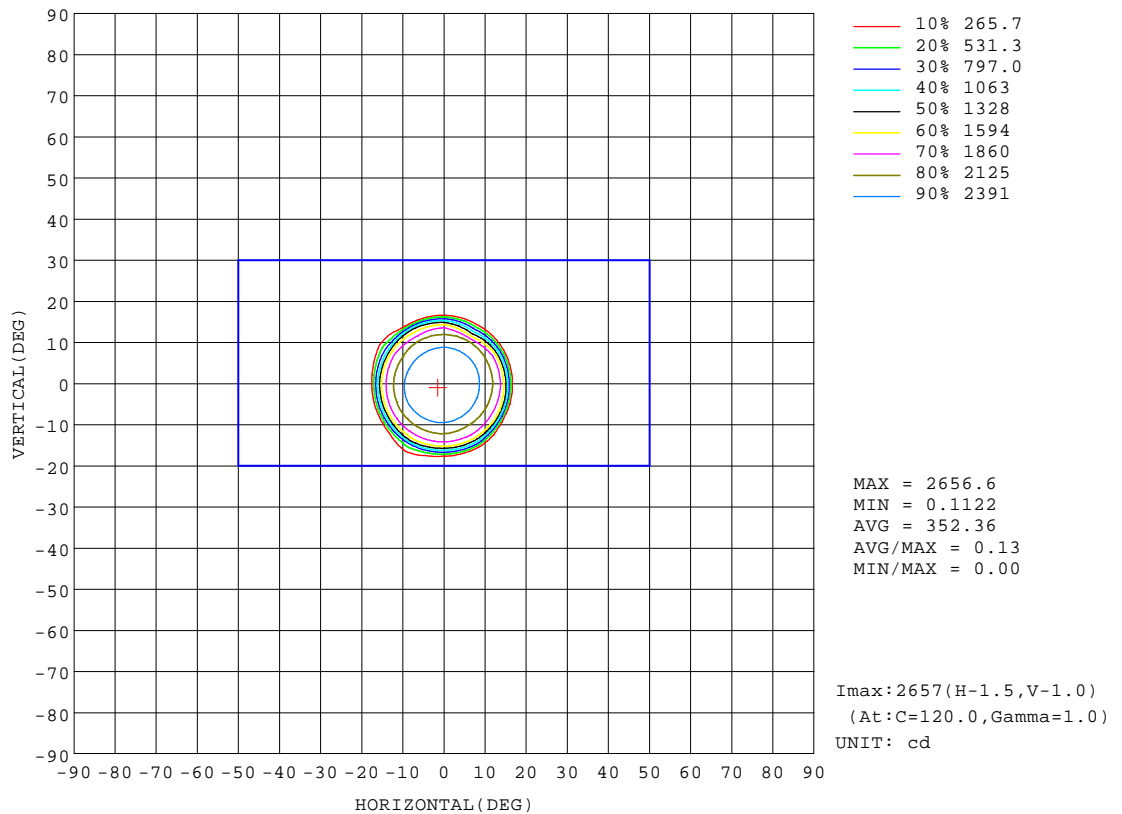
REFLECTANCE										
Ceiling	0.8	0.8	0.8	0.7	0.7	0.7	0.5	0.5	0.5	0
Walls	0.7	0.5	0.3	0.7	0.5	0.3	0.7	0.5	0.3	0
Working plane	0.2	0.2	0.2	0.2	0.2	0.2	0.2	0.2	0.2	0
ROOM INDEX	UTILIZATION FACTORS(PERCENT) $k(RI) \times RCR = 5$									
k = 0.60	31	29	28	31	29	28	31	29	28	27
0.80	33	32	31	33	32	30	33	31	30	29
1.00	35	33	32	34	33	32	34	33	32	30
1.25	36	34	33	35	34	33	35	34	33	31
1.50	37	35	34	36	35	34	35	34	34	32
2.00	37	36	35	37	36	35	36	35	34	33
2.50	38	37	36	37	36	35	36	35	35	33
3.00	38	37	36	38	37	36	37	36	35	33
4.00	39	38	37	38	37	37	37	36	36	34
5.00	39	39	38	39	38	37	37	37	36	34
ROOM INDEX	UF(total)									Direct
According to DIN EN 13032-2 2004			Suspended					SHRNOM = 1.25		

C Range: 0 - 360DEG
C Interval: 30.0DEG
Test Speed: HIGH
Temperature:25.3℃
Operators:zoe
Test Date:2025-1-8

Range: 0 - 180DEG
Interval: 1.0DEG
Test System:EVERFINE GO-SPEX500_V1 SYSTEM V2.00.461
Humidity:65.0%
Test Distance:3.160m [K=1.0000]
Remarks: LAMP:BXRE-30H1000-A-83 Ra:95
LENS:SDX-Mini-Z2035-WH 30R
NOT DRIVER:48V
30minutes warm-up

ISOCANDELA DIAGRAM

Test:U:47.997V I:0.3030A P:14.543W PF:1.0000 Freq:0Hz Lamp Flux:1597.4lx1 lm		
NAME: OZ48-SBF-64	TYPE:	WEIGHT:
SPEC.: 3000K	DIM.:	SERIAL No.: 2501080041
MFR.: RISE	SUR.: 0.00101736m2	Shielding Angle:

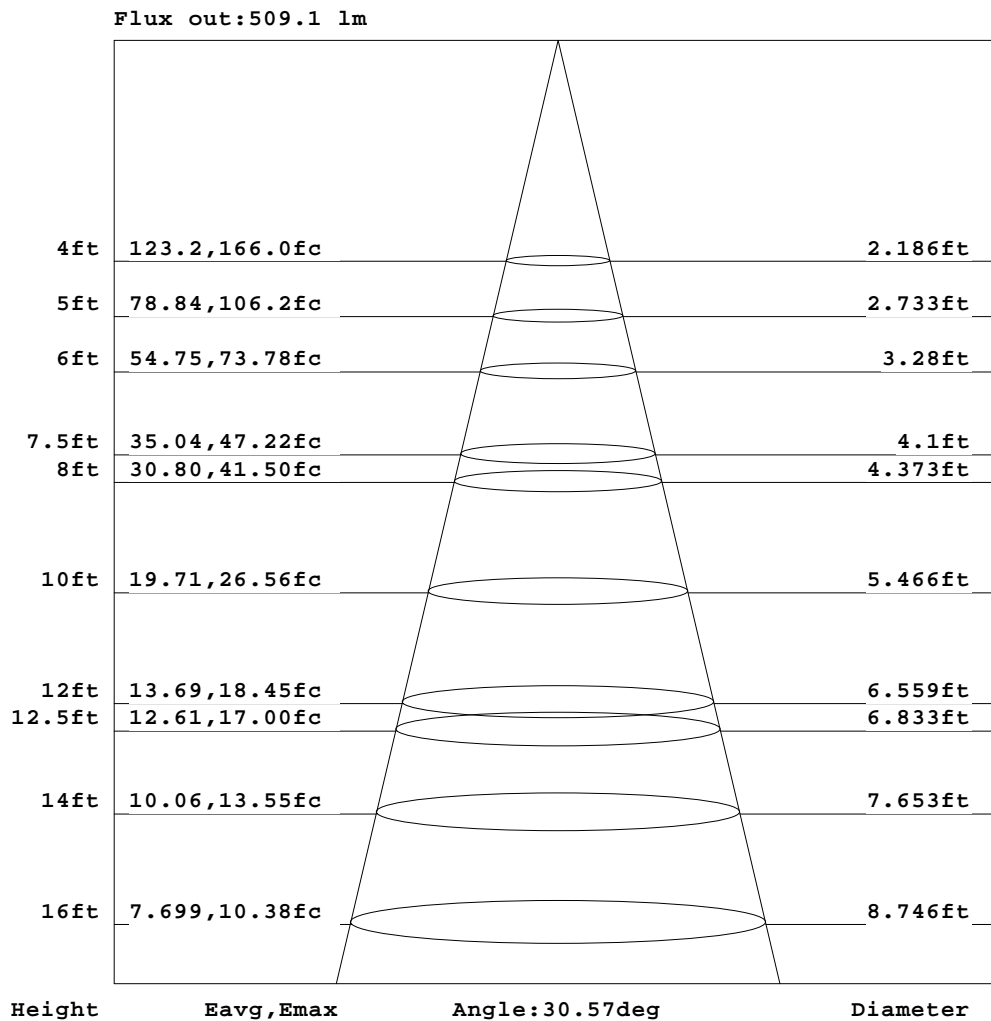


C Range: 0 - 360DEG
C Interval: 30.0DEG
Test Speed: HIGH
Temperature:25.3℃
Operators:zoe
Test Date:2025-1-8

Range: 0 - 180DEG
Interval: 1.0DEG
Test System:EVERFINE GO-SPEX500_V1 SYSTEM V2.00.461
Humidity:65.0%
Test Distance:3.160m [K=1.0000]
Remarks: LAMP:BXRE-30H1000-A-83 Ra:95
LENS:SDX-Mini-Z2035-WH 30R
NOT DRIVER:48V
30minutes warm-up

AAI Figure

Test:U:47.997V I:0.3030A P:14.543W PF:1.0000 Freq:0Hz Lamp Flux:1597.41x1 lm		
NAME: OZ48-SBF-64	TYPE:	WEIGHT:
SPEC.: 3000K	DIM.:	SERIAL No.: 2501080041
MFR.: RISE	SUR.: 0.00101736m2	Shielding Angle:



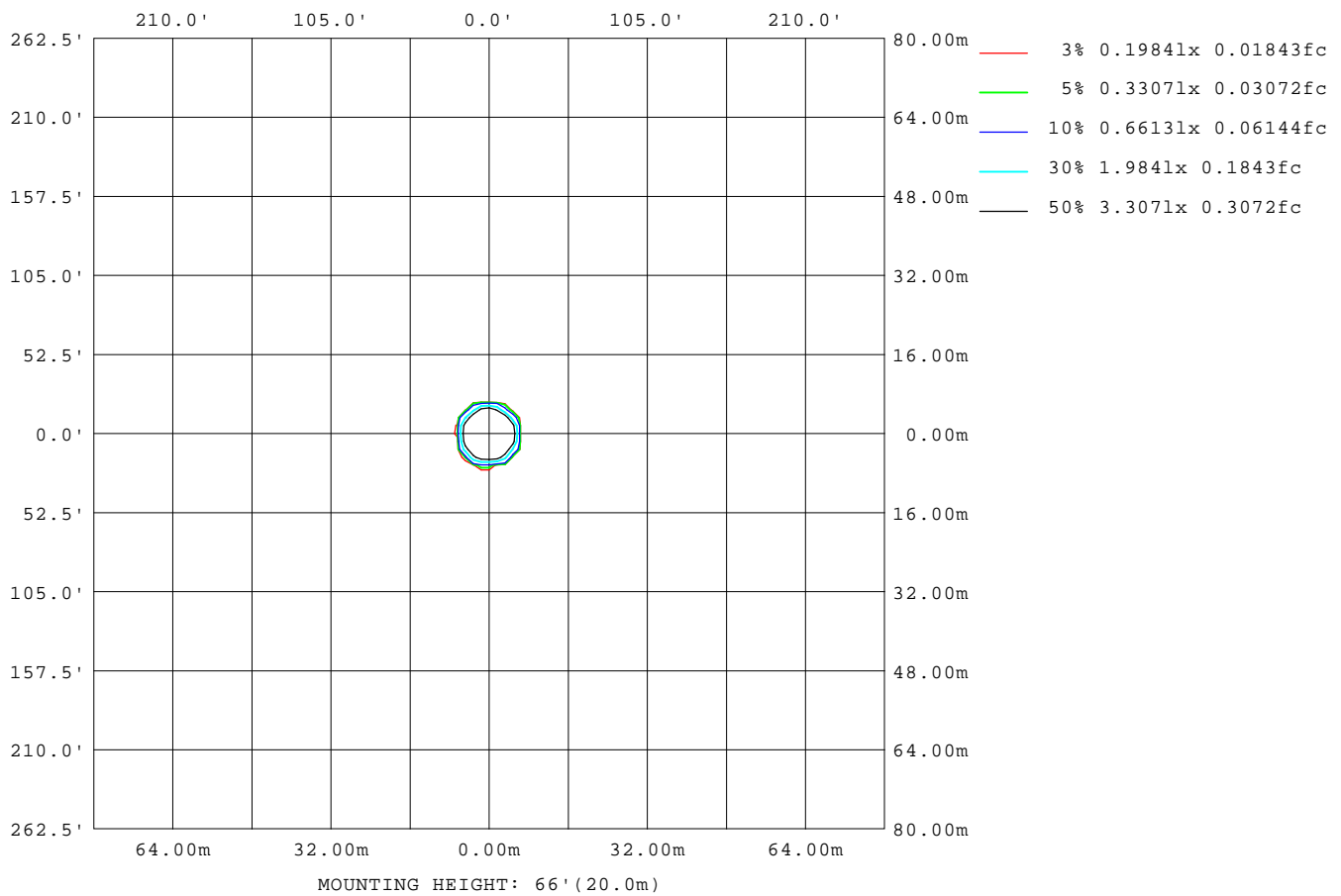
Note: The Curves indicate the illuminated area and the average illumination when the luminaire is at different distance.

C Range: 0 - 360DEG
C Interval: 30.0DEG
Test Speed: HIGH
Temperature: 25.3 °C
Operators: zoe
Test Date: 2025-1-8

Range: 0 - 180DEG
Interval: 1.0DEG
Test System: EVERFINE GO-SPEX500_V1 SYSTEM V2.00.461
Humidity: 65.0%
Test Distance: 3.160m [K=1.0000]
Remarks: LAMP: BXRE-30H1000-A-83 Ra: 95
LENS: SDX-Mini-Z2035-WH 30R
NOT DRIVER: 48V
30minutes warm-up

ISOLUX DIAGRAM

Test:U:47.997V I:0.3030A P:14.543W PF:1.0000 Freq:0Hz Lamp Flux:1597.4lx1 lm		
NAME: OZ48-SBF-64	TYPE:	WEIGHT:
SPEC.: 3000K	DIM.:	SERIAL No.: 2501080041
MFR.: RISE	SUR.: 0.00101736m2	Shielding Angle:



C Range: 0 - 360DEG
C Interval: 30.0DEG
Test Speed: HIGH
Temperature:25.3℃
Operators:zoe
Test Date:2025-1-8

Range: 0 - 180DEG
Interval: 1.0DEG
Test System:EVERFINE GO-SPEX500_V1 SYSTEM V2.00.461
Humidity:65.0%
Test Distance:3.160m [K=1.0000]
Remarks: LAMP:BXRE-30H1000-A-83 Ra:95
LENS:SDX-Mini-Z2035-WH 30R
NOT DRIVER:48V
30minutes warm-up

LED Avg.L Report

Test:U:47.997V I:0.3030A P:14.543W PF:1.0000 Freq:0Hz Lamp Flux:1597.41x1 lm		
NAME: OZ48-SBF-64	TYPE:	WEIGHT:
SPEC.: 3000K	DIM.:	SERIAL No.: 2501080041
MFR.: RISE	SUR.: 0.00101736m2	Shielding Angle:

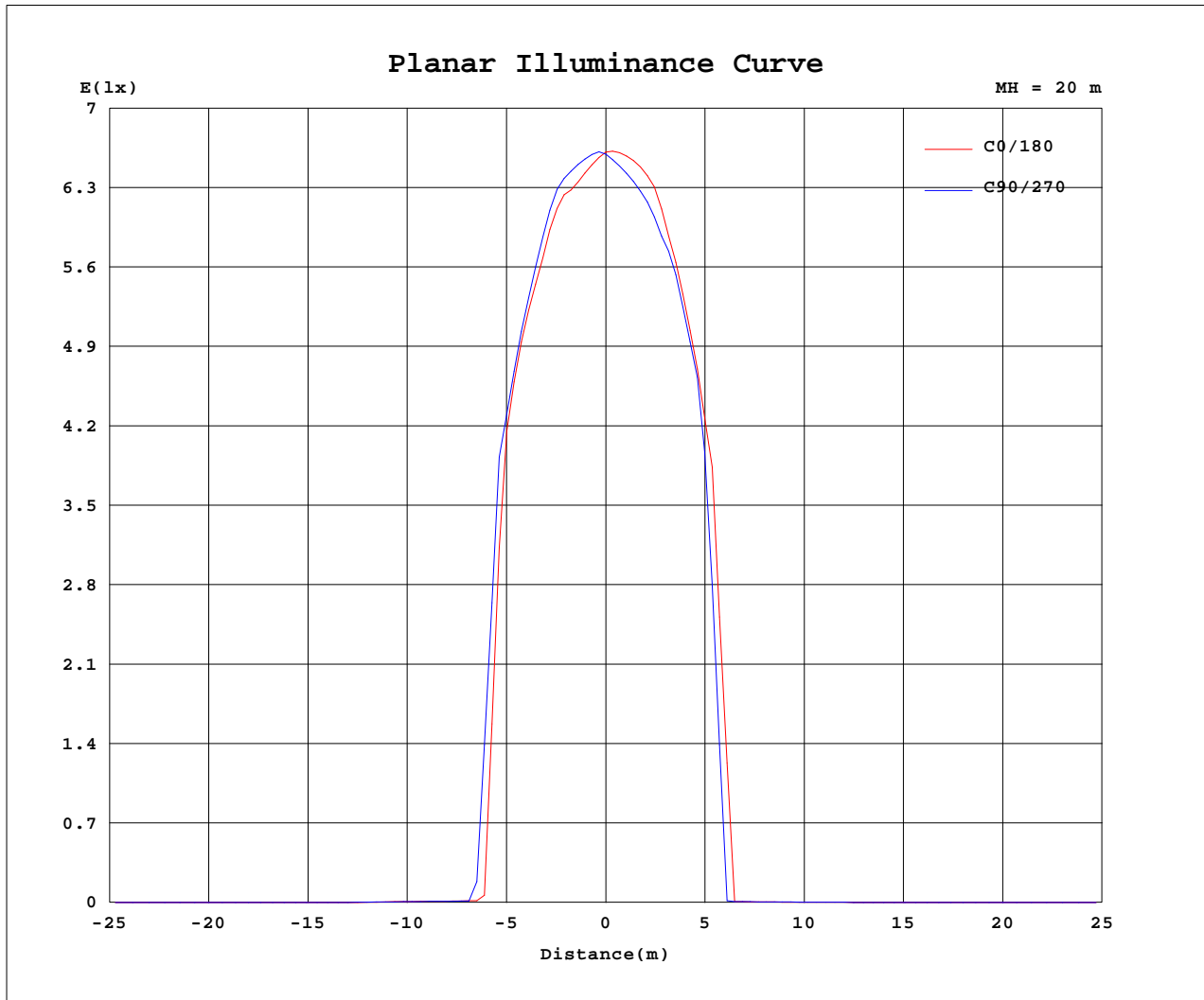
AvgL	cd/m2
L_0~180(65)av	167
L_0~180(75)av	51
L_0~180(85)av	188
L_90~270(65)av	155
L_90~270(75)av	38
L_90~270(85)av	179
L_45(65)av	160
L_45(75)av	23
L_45(85)av	52

Standard: GB/T 29293-2012

C Range: 0 - 360DEG
C Interval: 30.0DEG
Test Speed: HIGH
Temperature:25.3℃
Operators:zoe
Test Date:2025-1-8

Range: 0 - 180DEG
Interval: 1.0DEG
Test System:EVERFINE GO-SPEX500_V1 SYSTEM V2.00.461
Humidity:65.0%
Test Distance:3.160m [K=1.0000]
Remarks: LAMP:BXRE-30H1000-A-83 Ra:95
LENS:SDX-Mini-Z2035-WH 30R
NOT DRIVER:48V
30minutes warm-up

Planar Illuminance Curve



C Range: 0 - 360DEG
 C Interval: 30.0DEG
 Test Speed: HIGH
 Temperature: 25.3 °C
 Operators: zoe
 Test Date: 2025-1-8

Range: 0 - 180DEG
 Interval: 1.0DEG
 Test System: EVERFINE GO-SPEX500_V1 SYSTEM V2.00.461
 Humidity: 65.0%
 Test Distance: 3.160m [K=1.0000]
 Remarks: LAMP: BXRE-30H1000-A-83 Ra: 95
 LENS: SDX-Mini-Z2035-WH 30R
 NOT DRIVER: 48V
 30minutes warm-up



LUMINOUS DISTRIBUTION INTENSITY DATA

Test:U:47.997V I:0.3030A P:14.543W PF:1.0000 Freq:0Hz Lamp Flux:1597.4lx1 lm		
NAME: OZ48-SBF-64	TYPE:	WEIGHT:
SPEC.: 3000K	DIM.:	SERIAL No.: 2501080041
MFR.: RISE	SUR.: 0.00101736m2	Shielding Angle:

Table--1

UNIT: cd

C(DEG) (DEG)	0	30	60	90	120	150	180	210	240	270	300	330						
0	2643	2643	2643	2643	2643	2643	2643	2643	2643	2643	2643	2643						
5	2539	2560	2586	2613	2629	2637	2621	2592	2567	2541	2523	2517						
10	2281	2287	2313	2351	2366	2383	2362	2306	2294	2322	2319	2276						
15	1388	1622	1668	1747	1735	1742	1703	1537	1441	1244	840	1207						
20	7.18	8.09	7.77	6.78	14.2	6.49	3.72	3.67	3.75	3.89	3.83	3.99						
25	5.79	7.20	6.79	5.42	5.08	4.99	2.61	2.75	2.91	2.94	2.95	3.04						
30	3.28	4.41	4.29	3.97	3.73	3.63	2.08	2.13	2.23	2.25	2.19	2.24						
35	0.97	0.94	0.97	1.02	1.10	1.19	1.18	1.17	1.19	1.06	0.97	0.98						
40	0.39	0.38	0.43	0.45	0.61	0.77	0.75	0.73	0.73	0.56	0.48	0.46						
45	0.26	0.24	0.29	0.28	0.40	0.52	0.51	0.50	0.49	0.36	0.30	0.30						
50	0.17	0.16	0.20	0.20	0.26	0.33	0.34	0.33	0.31	0.23	0.19	0.20						
55	0.11	0.11	0.14	0.13	0.17	0.22	0.22	0.22	0.21	0.15	0.13	0.12						
60	0.08	0.07	0.09	0.09	0.11	0.13	0.14	0.14	0.13	0.10	0.09	0.09						
65	0.06	0.05	0.06	0.06	0.07	0.08	0.08	0.08	0.08	0.07	0.06	0.07						
70	0.05	0.03	0.03	0.03	0.03	0.03	0.04	0.03	0.03	0.05	0.05	0.05						
75	0.01	0.00	0.01	0.01	0.01	0.01	0.01	0.01	0.01	0.01	0.01	0.01						
80	0.02	0.00	0.01	0.01	0.01	0.01	0.01	0.01	0.01	0.01	0.01	0.01						
85	0.02	0.00	0.01	0.02	0.01	0.00	0.02	0.01	0.01	0.02	0.01	0.01						
90	0.00	0.00	0.00	0.00	0.00	0.00	0.00	0.00	0.00	0.00	0.00	0.00						
95	0.00	0.00	0.00	0.00	0.00	0.00	0.00	0.00	0.00	0.00	0.00	0.00						
100	0.00	0.00	0.00	0.00	0.00	0.00	0.00	0.00	0.00	0.00	0.00	0.00						
105	0.00	0.00	0.00	0.00	0.00	0.00	0.00	0.00	0.00	0.00	0.00	0.00						
110	0.00	0.00	0.00	0.00	0.00	0.00	0.00	0.00	0.00	0.00	0.00	0.00						
115	0.00	0.00	0.00	0.00	0.00	0.00	0.00	0.00	0.00	0.00	0.00	0.00						
120	0.00	0.00	0.00	0.00	0.00	0.00	0.00	0.00	0.00	0.00	0.00	0.00						
125	0.00	0.00	0.00	0.00	0.00	0.00	0.00	0.00	0.00	0.00	0.00	0.00						
130	0.00	0.00	0.00	0.00	0.00	0.00	0.00	0.00	0.00	0.00	0.00	0.00						
135	0.00	0.00	0.00	0.00	0.00	0.00	0.00	0.00	0.00	0.00	0.00	0.00						
140	0.00	0.00	0.00	0.00	0.00	0.00	0.00	0.00	0.00	0.00	0.00	0.00						
145	0.00	0.00	0.00	0.00	0.00	0.00	0.00	0.00	0.00	0.00	0.00	0.00						
150	0.00	0.00	0.00	0.00	0.00	0.00	0.00	0.00	0.00	0.00	0.00	0.00						
155	0.00	0.00	0.00	0.00	0.00	0.00	0.00	0.00	0.00	0.00	0.00	0.00						
160	0.00	0.00	0.00	0.00	0.00	0.00	0.00	0.00	0.00	0.00	0.00	0.00						
165	0.00	0.00	0.00	0.00	0.00	0.00	0.00	0.00	0.00	0.00	0.00	0.00						
170	0.00	0.00	0.00	0.00	0.00	0.00	0.00	0.00	0.00	0.00	0.00	0.00						
175	0.00	0.00	0.00	0.00	0.00	0.00	0.00	0.00	0.00	0.00	0.00	0.00						
180	0.00	0.00	0.00	0.00	0.00	0.00	0.00	0.00	0.00	0.00	0.00	0.00						

C Range: 0 - 360DEG
C Interval: 30.0DEG
Test Speed: HIGH
Temperature:25.3℃
Operators:zoe
Test Date:2025-1-8

Range: 0 - 180DEG
Interval: 1.0DEG
Test System:EVERFINE GO-SPEX500_V1 SYSTEM V2.00.461
Humidity:65.0%
Test Distance:3.160m [K=1.0000]
Remarks: LAMP:BXRE-30H1000-A-83 Ra:95
LENS:SDX-Mini-Z2035-WH 30R
NOT DRIVER:48V
30minutes warm-up